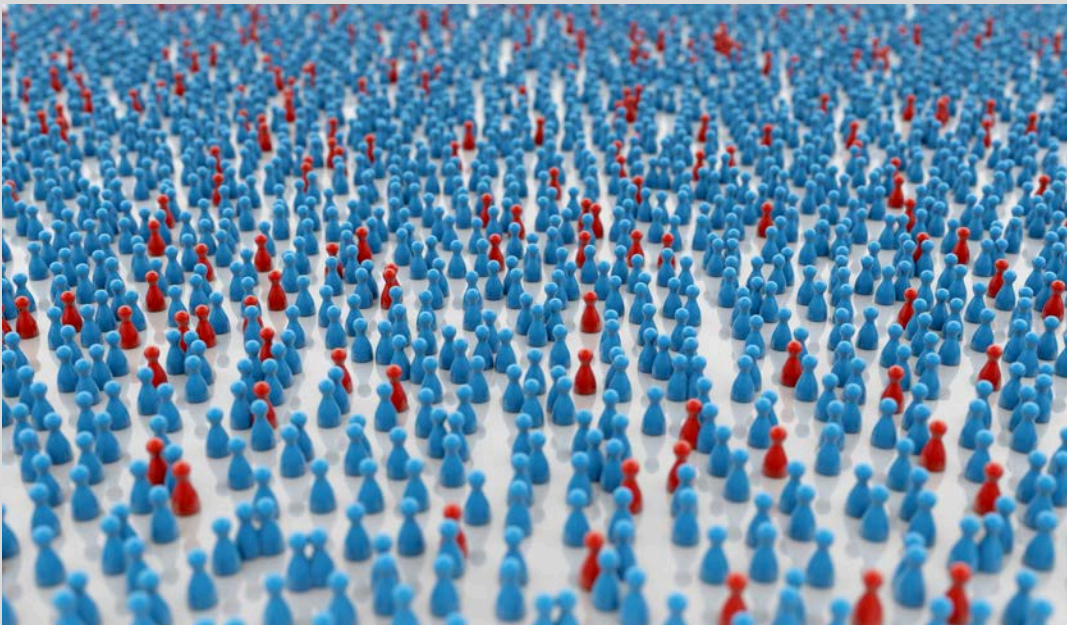


# MASTER OF SCIENCE

POSTGRADUATE STUDY PROGRAMME (60 ECTS)

---

# EPIDEMIOLOGY



## **START**

EACH WINTER SEMESTER (OCTOBER)

## **DURATION**

3-4 SEMESTERS

## **APPLICATIONS**

BY 30 AUGUST

# EPIDEMIOLOGY - POSTGRADUATE

## CONTENT

The part-time Master of Science in Epidemiology (MSE) provides in-depth scientific and methodological training for the planning, conduct, and analysis of epidemiological studies. It is designed for graduates of natural, health, or social science disciplines who wish to explore the causes of diseases, population-based research, and evidence-based decision-making in health care in greater depth. The MSE offers comprehensive education in epidemiology, biostatistics, medical informatics, and public health. A key focus is on the development of applied skills for independently addressing complex epidemiological research questions.

## STRUCTURE

The programme starts each winter semester and comprises four semesters of part-time study. Language of instruction: English

Core topics include:

- Introduction to Epidemiology
- Designing Studies
- Biostatistics & Data Analysis
- Science Communication, Grant Applications
- Advanced Epidemiological Methods

Students can choose from a wide range of electives and specialize in Clinical Research or Population Studies.

The curriculum integrates practice-oriented teaching, interdisciplinary approaches, and current methods in epidemiological research.

## PERSPECTIVES

Graduates of the MSE programme are well prepared for positions in:

- Research Institutes & Universities
- Public Health Services
- Governmental Agencies
- Clinical Research Organisations
- Pharmaceutical Industry
- International Health Organizations

## AT A GLANCE

### START

Winter semester (October)

### DURATION

3-4 semester (part-time)

Please note: 1st semester has a high workload

### ADMISSION REQUIREMENTS

- University degree in medicine, natural or social sciences, or a related field (240 ECTS or more)
  - At least 1 year of relevant professional experience
  - Proficiency in English
- or
- Higher education entrance qualification
  - Minimum 3 years of relevant work experience
  - Aptitude test
  - Proficiency in English

### TUITION FEE

7,000€ for the full programme  
(instalment payment possible)

### CONTACT

seibert@uni-mainz.de; +49 (0) 6131 17-8428

### MORE INFORMATION & INSIGHTS



### TESTIMONIAL

*"I am a research associate at the Mainz University Medical Centre and completed the Master's in Epidemiology while working. Thanks to the excellent organisation and structure of the course, I finished within the standard period despite professional commitments. I especially valued the direct contact with the approachable lecturers, all recognised experts in their fields. Although I had already worked on epidemiological topics, the programme significantly deepened my knowledge and skills. I was able to apply what I learned directly to my work – an important added value for my career."*

(Dr. Omar H. , 2024)

